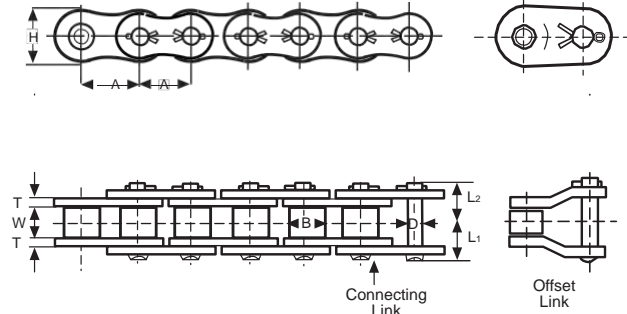


QUICK REFERENCE GUIDE

- Solid Bushings ➤ Solid Rollers
- High Grade Alloy Steel ➤ Shot Peened Parts

HKK's precision power transmission roller chains are manufactured for high strength and long life. HKK solid bushings and rollers, specially treated pins and bushings, and stringently controlled heat treatment are only a few of the many features built into HKK chain. HKK meets or exceeds ANSI standard B29.1, making HKK the most suitable selection for almost any application.

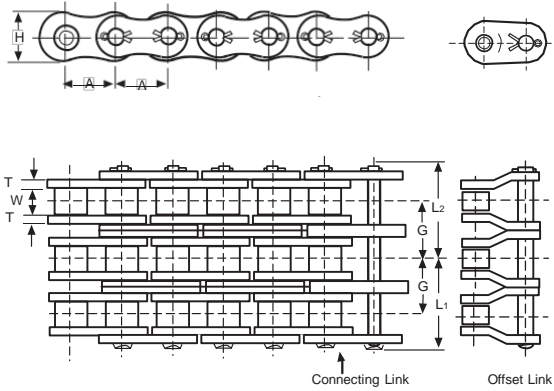


SINGLE STRAND

HKK Chain No.	Pitch A	Roller		Pin	Plate		Overall Width		Transverse Pitch G	Maximum Allowable Load (lbs)	Average Ultimate Strength (lbs)	Average Weight Per Foot (lbs)				
		Dia. B	Width W	Dia. D	Height H	Thickness T	L1	L2				Riveted	Cottered			
** HKK 25	1/4	0.130	1/8	0.0905	0.236	0.030	0.150	0.185	-	140	1,050	0.09	-			
* HKK 35	3/8	0.200	3/16	0.141	0.347	0.050	0.233	0.267	0.398	560	2,400	0.23	-			
* HKK 35-2							0.432	0.454						810	4,800	0.42
* HKK 35-3							0.630	0.666						1,210	7,200	0.62
* HKK 35-4							0.831	0.867						1,600	9,600	0.82
** HKK 41	1/2	0.306	1/4	0.141	0.386	0.050	0.266	0.312	-	500	2,600	0.27	-			
HKK 40	1/2	0.312	5/16	0.156	0.457	0.060	0.323	0.354	0.567	940	4,300	0.40	-			
HKK 40-2							0.603	0.645		1,370	8,600	0.82	-			
HKK 40-3							0.882	0.933		2,025	12,900	1.24	-			
HKK 40-4							1.177	1.236		2,670	17,200	1.67	-			
HKK 50	5/8	0.400	3/8	0.200	0.571	0.080	0.400	0.445	0.712	1,620	7,200	0.67	-			
HKK 50-2							0.752	0.803		2,380	14,400	1.36	-			
HKK 50-3							1.099	1.169		3,500	21,600	2.02	-			
HKK 50-4							1.472	1.536		4,620	28,800	2.69	-			
HKK 60	3/4	0.469	1/2	0.234	0.689	0.094	0.500	0.548	0.898	2,470	10,000	0.98	1.02			
HKK 60-2							0.945	1.000		3,315	20,000	1.98	2.02			
HKK 60-3							1.386	1.457		4,875	30,000	2.98	3.02			
HKK 60-4							1.854	1.933		6,435	40,000	3.98	4.02			
HKK 60-5							2.299	2.378		7,740	50,000	4.98	5.02			
HKK 60-6							2.752	2.831		9,130	60,000	5.98	6.02			
HKK 60-8	3.650	3.732	12,300	80,000	7.98	8.02										
HKK 80	1	0.625	5/8	0.312	0.921	0.125	0.628	0.750	1.153	4,140	17,700	1.69	1.73			
HKK 80-2							1.201	1.319		5,610	35,400	3.42	3.47			
HKK 80-3							1.780	1.898		8,250	53,100	5.16	5.20			
HKK 80-4							2.366	2.488		10,890	70,800	6.89	6.93			
HKK 80-5							2.945	3.063		12,900	88,500	8.62	8.67			
HKK 80-6							3.524	3.638		15,210	106,200	10.36	10.40			
HKK 80-8	4.677	4.791	20,500	141,600	13.82	13.87										
HKK 100	1-1/4	0.750	3/4	0.375	1.154	0.156	0.772	0.913	1.409	6,360	26,200	2.63	2.69			
HKK 100-2							1.475	1.608		8,600	52,400	5.20	5.26			
HKK 100-3							2.180	2.313		12,650	78,600	7.78	7.84			
HKK 100-4							2.898	3.031		16,690	104,800	10.35	10.42			
HKK 100-5							3.598	3.740		19,780	131,000	12.93	13.00			
HKK 100-6							4.303	4.450		23,320	157,200	15.51	15.58			
HKK 100-8	5.713	5.854	31,440	209,600	20.67	20.73										

* - Rollerless Chain: Roller Diameter "B" is identical to the bushing diameter, as these chains have no rollers
 ** - Split Bushing Chains

Dimensions in inches & pounds



Standard Length Packaging

Chain No.	Pitch (Inches)	Standard 10' Box	20' Box	50' Reel	100' Reel	200' Reel	250' Reel	500' Reel
25	1/4	480 Links	-	-	-	-	-	X
35	3/8	320 Links	X	X	X	-	X	-
40	1/2	240 Links	X	X	X	X	-	-
41	1/2	240 Links	-	-	-	-	X	-
50	5/8	192 Links	X	X	X	-	-	-
60	3/4	160 Links	X	X	X	-	-	-
80	1	120 Links	-	X	-	-	-	-
100	1-1/4	96 Links	-	X	-	-	-	-
120	1-1/2	80 Links	-	-	-	-	-	-
140	1-3/4	68 Links	-	-	-	-	-	-
160	2	60 Links	-	-	-	-	-	-
180	2-1/4	54 Links	-	-	-	-	-	-
200	2-1/2	48 Links	-	-	-	-	-	-
240	3	40 Links	-	-	-	-	-	-

MULTIPLE STRAND

HKK Chain No.	Pitch	Roller		Pin	Plate		Overall Width		Transverse Pitch	Maximum Allowable Load (lbs)	Average Ultimate Strength (lbs)	Average Weight Per Foot (lbs)	
		Dia.	Width	Dia.	Height	Thickness	L1	L2				Riveted	Cottered
	A	B	W	D	H	T	G						
HKK 120	1-1/2	0.875	1	0.437	1.382	0.187	0.971	1.124	1.787	8,540	37,700	3.87	3.91
HKK 120-2							1.857	2.010		11,560	75,400	7.71	7.78
HKK 120-3							2.749	2.901		17,000	113,100	11.56	11.62
HKK 120-4							3.661	3.815		22,440	150,800	15.40	15.49
HKK 120-5							4.555	4.705		26,650	188,500	19.24	19.33
HKK 120-6							5.449	5.598		31,440	226,200	23.09	23.18
HKK 120-8	7.228	7.394	42,370	301,600	30.78	30.87							
HKK 140	1-3/4	1.000	1	0.500	1.610	0.219	1.060	1.228	1.927	11,340	48,800	4.98	5.02
HKK 140-2							2.008	2.185		15,300	97,600	9.82	9.87
HKK 140-3							2.983	3.163		22,500	146,400	14.71	14.78
HKK 140-4							3.957	4.126		29,700	195,200	19.60	19.67
HKK 140-5							4.921	5.087		35,250	244,000	24.49	24.58
HKK 140-6							5.882	6.051		41,580	292,800	29.38	29.47
HKK 140-8	7.800	7.980	56,040	390,400	39.16	39.20							
HKK 160	2	1.125	1-1/4	0.562	1.839	0.250	1.262	1.435	2.303	14,900	62,200	6.58	6.71
HKK 160-2							2.414	2.586		20,230	124,400	13.07	13.20
HKK 160-3							3.556	3.728		29,750	186,600	19.56	19.69
HKK 160-4							4.728	4.902		39,270	248,800	26.04	26.18
HKK 160-5							5.878	6.078		46,430	311,000	32.53	32.67
HKK 160-6							7.031	7.200		54,760	373,200	39.02	39.16
HKK 160-8	9.331	9.520	73,810	497,600	52.00	54.13							
HKK 180	2-1/4	1.406	1-13/32	0.687	2.067	0.283	1.429	1.658	2.587	16,600	77,700	9.00	9.31
HKK 180-2							2.720	2.950		22,100	155,400	17.89	18.09
HKK 180-3							4.027	4.249		32,500	233,100	26.78	26.98
HKK 180-4							5.315	5.539		42,900	310,800	35.67	35.89
HKK 180-5							6.610	6.827		53,310	388,500	44.56	44.78
HKK 180-6							7.902	8.118		62,870	466,200	53.44	53.67
HKK 200	2-1/2	1.562	1-1/2	0.781	2.354	0.312	1.542	1.876	2.819	18,600	102,000	11.38	11.53
HKK 200-2							2.953	3.288		27,200	204,000	22.67	22.82
HKK 200-3							4.361	4.667		40,000	306,000	33.96	34.11
HKK 200-4							5.772	6.130		52,800	408,000	45.24	45.41
HKK 200-5							7.189	7.527		62,760	510,000	56.53	56.69
HKK 200-6							8.598	8.933		74,030	612,000	67.82	68.00
HKK 240	3	1.875	1-7/8	0.936	2.768	0.375	1.900	3.457	3.457	25,400	148,000	15.89	16.11
HKK 240-2							3.626	3.925		37,400	296,000	31.67	31.89
HKK 240-3							5.354	5.654		55,000	444,000	47.44	47.67
HKK 240-4							7.079	7.378		73,480	592,000	63.22	63.49

Dimensions in inches & pounds