



LOAD BEARING ROLLER ASSEMBLIES CAM FOLLOWERS

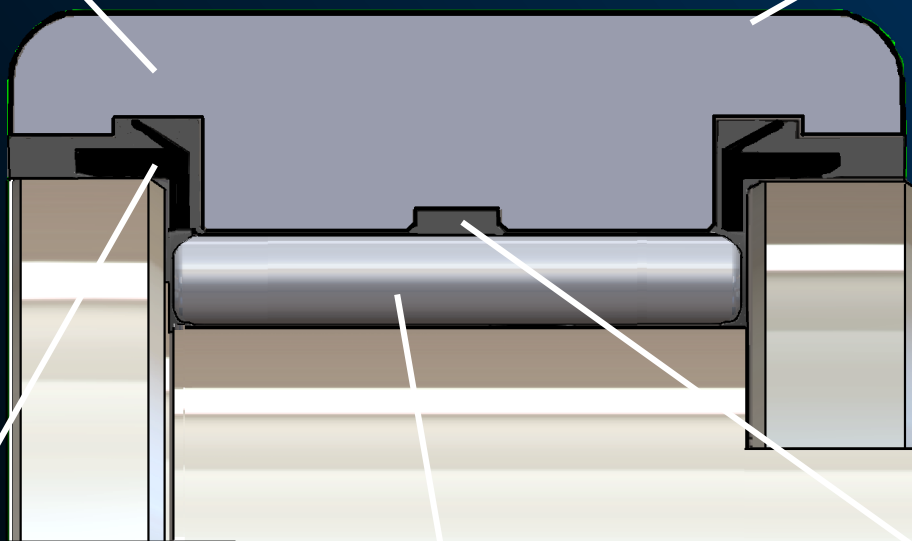
Proven Toughness Under Radial Loads

THICK SECTION ROLLER BODY

Proven toughness under heavy radial loads

CASE HARDENED ROLLER BODY

Maintains the integrity of the assembly by preventing pre-mature fracture under shock loads



MOLY-FILLED NYLON LIP SEALS

Dual function seal provides low level thrust capacity and contamination exclusion

FULL COMPLIMENT NEEDLE BEARINGS

Reliable performance under moderate to heavy radial dynamic loads.

PREMIUM SYNTHETIC LUBRICANT

High performance grease resistant to break down to minimize downtime

EASY INSTALLATION BORE

Efficient yoke roller installation by eliminating the need for tedious installation methods.

LOAD BEARING ROLLER ASSEMBLIES

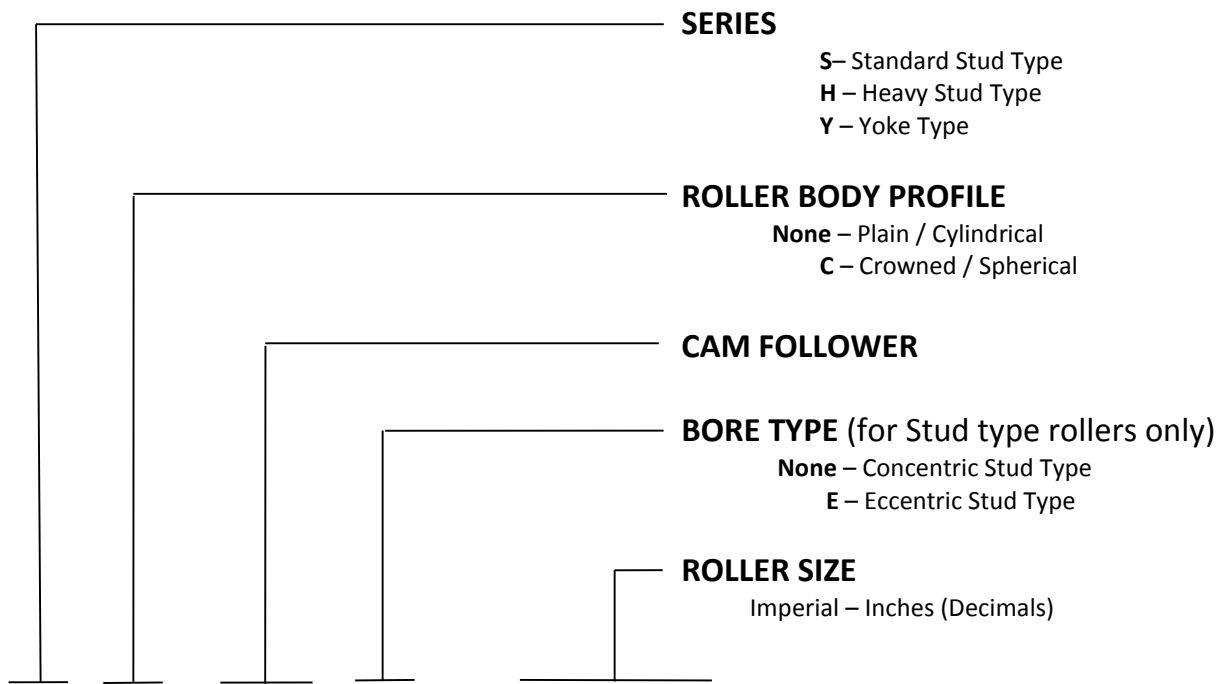
Cam Follower Assemblies

Part Number Nomenclature



989.358.6148

www.pcimfg.com



S C CF E - 2.50 - S H

Standard Stud Type, Crowned, Cam Follower, 2.50" Roller Diameter, Sealed, with a Hex Socket

SEALING

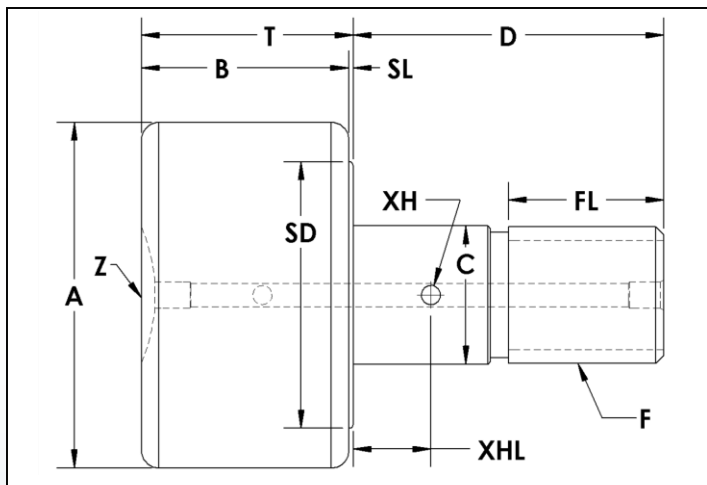
S – Sealed

SLOT TYPE

None – Screwdriver Slot
H – Hex Socket

SCF-S Series Cam Follower Assembly

Plain/Cylindrical – Stud Type Concentric – Screwdriver Slot
Full Compliment Needle Bearings - Regreasable



Stud Type Cam Follower Part Number	A	B	C	D	F	FL	SD	SL	T	XH	XHL	Z
	Roller Dia. +.000 -.001	Roller Width	Stud Dia. +.000 -.001	Stud Length	Thread Size	Thread Length	Shoulder Dia.	Shoulder Length	Roller Width + Shoulder Length	Crosshole Dia	Crosshole Location	Lube Size
SCF-2.00-S	2.000	1.25	0.875	2.00	7/8 - 14	1.00	1.6	0.03	1.28	0.13	0.50	3/16 Drive
SCF-2.25-S	2.250	1.25	0.875	2.00	7/8 - 14	1.00	1.6	0.03	1.28	0.13	0.50	3/16 Drive
SCF-2.50-S	2.500	1.50	1.000	2.25	1 - 14	1.13	1.9	0.03	1.53	0.13	0.56	3/16 Drive
SCF-2.75-S	2.750	1.50	1.000	2.25	1 - 14	1.13	1.9	0.03	1.53	0.13	0.56	3/16 Drive
SCF-3.00-S	3.000	1.75	1.250	2.50	1 1/4 - 12	1.25	2.2	0.03	1.78	0.13	0.63	1/4 Drive
SCF-3.25-S	3.250	1.75	1.250	2.50	1 1/4 - 12	1.25	2.2	0.03	1.78	0.13	0.63	1/4 Drive
SCF-3.50-S	3.500	2.00	1.375	2.75	1 3/8 - 12	1.38	2.5	0.03	2.03	0.13	0.69	1/4 Drive
SCF-4.00-S	4.000	2.25	1.500	3.50	1 1/2 - 12	1.50	2.5	0.03	2.28	0.13	0.75	1/8-27 NPT

Stud Type Cam Follower Part Number	Basic Radial Dynamic Load Rating (lbs) C	Basic Radial Static Load Rating (lbs) Co	Stud Capacity (lbs)	Max. Clamping Torque (in-lbs)*	Seal Type	Bearing Type	Approx. Roller Weight (lbs)
SCF-2.00-S	8,090	21,140	6,260	1,200	Moly-Filled Nylon Lip	FC Needle	1.32
SCF-2.25-S	8,090	21,140	6,260	1,200	Moly-Filled Nylon Lip	FC Needle	1.61
SCF-2.50-S	11,720	32,900	7,820	2,250	Moly-Filled Nylon Lip	FC Needle	2.35
SCF-2.75-S	11,720	32,900	7,820	2,250	Moly-Filled Nylon Lip	FC Needle	2.78
SCF-3.00-S	17,620	49,820	13,120	2,250	Moly-Filled Nylon Lip	FC Needle	4.01
SCF-3.25-S	17,620	49,820	13,120	2,250	Moly-Filled Nylon Lip	FC Needle	4.54
SCF-3.50-S	23,630	63,250	15,310	5,000	Moly-Filled Nylon Lip	FC Needle	6.04
SCF-4.00-S	30,270	89,540	17,700	5,000	Moly-Filled Nylon Lip	FC Needle	9.13

ADDITIONAL NOTES

*For lubricated threads, use half the maximum clamping torque value shown.

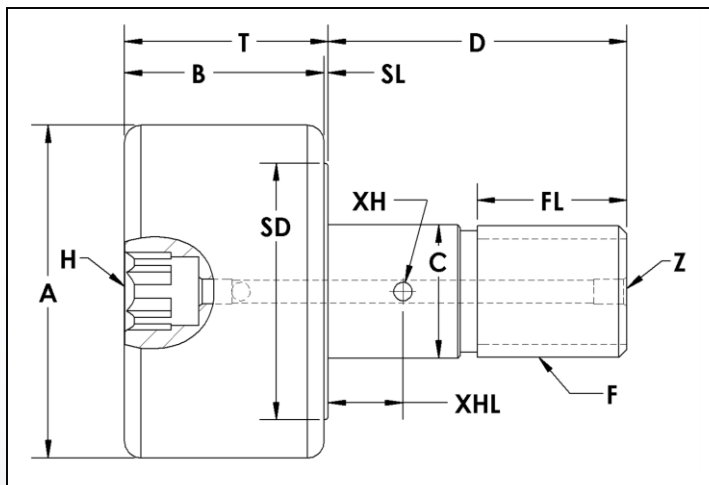
FC Needle: Full Compliment Needle Bearings – Alloy Steel

Grease Fittings & Jam Nut/Lock Washer sets are available at an additional cost.

Specifications subject to change without notice.

SCF-SH Series Cam Follower Assembly

Plain/Cylindrical – Stud Type Concentric – Hex Socket
Full Compliment Needle Bearings - Regreasable



Stud Type Cam Follower Part Number	A	B	C	D	F	FL	H	SD	SL	T	XH	XHL	Z
	Roller Dia. +.000 -.001	Roller Width	Stud Dia. +.000 -.001	Stud Length	Thread Size	Thread Length	Hex Size	Shoulder Dia.	Shoulder Length	Roller Width + Shoulder Length	Crosshole Dia	Crosshole Location	Lube Size
SCF-2.00-SH	2.000	1.25	0.875	2.00	7/8 - 14	1.00	7/16	1.6	0.03	1.28	0.13	0.50	3/16 Drive†
SCF-2.25-SH	2.250	1.25	0.875	2.00	7/8 - 14	1.00	7/16	1.6	0.03	1.28	0.13	0.50	3/16 Drive†
SCF-2.50-SH	2.500	1.50	1.000	2.25	1 - 14	1.13	1/2	1.9	0.03	1.53	0.13	0.56	3/16 Drive†
SCF-2.75-SH	2.750	1.50	1.000	2.25	1 - 14	1.13	1/2	1.9	0.03	1.53	0.13	0.56	3/16 Drive†
SCF-3.00-SH	3.000	1.75	1.250	2.50	1 1/4 - 12	1.25	3/4	2.2	0.03	1.78	0.13	0.63	1/4 Drive
SCF-3.25-SH	3.250	1.75	1.250	2.50	1 1/4 - 12	1.25	3/4	2.2	0.03	1.78	0.13	0.63	1/4 Drive
SCF-3.50-SH	3.500	2.00	1.375	2.75	1 3/8 - 12	1.38	3/4	2.5	0.03	2.03	0.13	0.69	1/4 Drive
SCF-4.00-SH	4.000	2.25	1.500	3.50	1 1/2 - 12	1.50	3/4	2.5	0.03	2.28	0.13	0.75	1/8-27 NPT
SCF-5.00-SH	5.000	2.75	2.000	5.06	2 - 12	2.56	7/8	3.9	0.06	2.81	0.19	0.88	1/8-27 NPT
SCF-6.00-SH	6.000	3.25	2.500	6.00	2 1/2 - 12	3.00	1	4.9	0.06	3.31	0.19	1.00	1/8-27 NPT
SCF-7.00-SH	7.000	3.75	3.000	7.69	3 - 12	4.13	1 1/4	5.4	0.06	3.81	0.19	1.25	1/4 NPT
SCF-8.00-SH	8.000	4.25	3.250	8.50	3 1/4 - 4	4.25	1 1/4	6.4	0.13	5.13‡	-	-	1/4 NPT
SCF-9.00-SH	9.000	4.75	3.750	9.50	3 1/2 - 4	4.75	1 1/4	7.4	0.13	5.63‡	-	-	1/4 NPT
SCF-10.00-SH	10.000	5.25	4.250	10.00	3 1/2 - 4	4.75	1 1/4	7.4	0.13	6.13‡	-	-	1/4 NPT

† Lubrication through threaded end and cross hole only

‡ Stud extends .750" beyond the roller body on end opposite the threads

Stud Type Cam Follower Part Number	Basic Radial Dynamic Load Rating (lbs) C	Basic Radial Static Load Rating (lbs) Co	Stud Capacity (lbs)	Max. Clamping Torque (in-lbs)*	Seal Type	Bearing Type	Approx. Roller Weight (lbs)
SCF-2.00-SH	8,090	21,140	6,260	1,200	Moly-Filled Nylon Lip	FC Needle	1.32
SCF-2.25-SH	8,090	21,140	6,260	1,200	Moly-Filled Nylon Lip	FC Needle	1.61
SCF-2.50-SH	11,720	32,900	7,820	2,250	Moly-Filled Nylon Lip	FC Needle	2.35
SCF-2.75-SH	11,720	32,900	7,820	2,250	Moly-Filled Nylon Lip	FC Needle	2.78
SCF-3.00-SH	17,620	49,820	13,120	2,250	Moly-Filled Nylon Lip	FC Needle	4.01
SCF-3.25-SH	17,620	49,820	13,120	2,250	Moly-Filled Nylon Lip	FC Needle	4.54
SCF-3.50-SH	23,630	63,250	15,310	5,000	Moly-Filled Nylon Lip	FC Needle	6.04
SCF-4.00-SH	30,270	89,540	17,700	5,000	Moly-Filled Nylon Lip	FC Needle	9.13
SCF-5.00-SH	53,590	135,900	34,040	5,000	Moly-Filled Nylon Lip	FC Needle	18.23
SCF-6.00-SH	61,690	160,900	56,450	5,000	Moly-Filled Nylon Lip	FC Needle	31.76
SCF-7.00-SH	81,860	213,860	84,740	5,000	Moly-Filled Nylon Lip	FC Needle	53.38
SCF-8.00-SH	111,400	288,200	80,020	5,000	Moly-Filled Nylon Lip	FC Needle	82.22
SCF-9.00-SH	151,400	366,860	112,010	5,000	Moly-Filled Nylon Lip	FC Needle	115.01
SCF-10.00-SH	160,480	431,130	149,750	5,000	Moly-Filled Nylon Lip	FC Needle	151.24

ADDITIONAL NOTES

*For lubricated threads, use half the maximum clamping torque value shown.

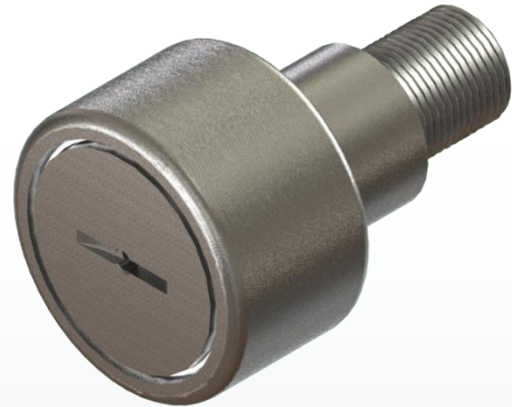
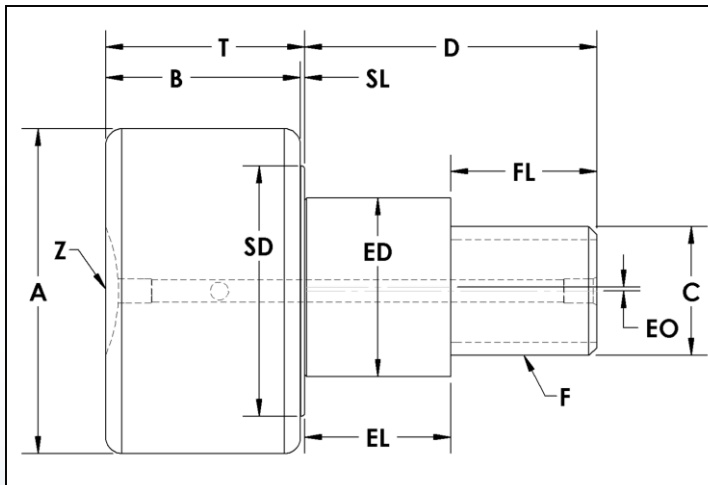
FC Needle: Full Compliment Needle Bearings – Alloy Steel

Grease Fittings & Jam Nut/Lock Washer sets are available at an additional cost.

Specifications subject to change without notice.

SCFE-S Series Cam Follower Assembly

Plain/Cylindrical – Stud Type Eccentric – Screwdriver Slot
Full Compliment Needle Bearings - Regreasable



Stud Type Cam Follower Part Number	A	B	C	D	ED	EL	EO	F	FL	SD	SL	T	Z
	Roller Dia. +.000 -.001	Roller Width	Stud Dia.	Stud Length	Ecc Dia +.000 -.002	Ecc Length	Ecc Offset	Thread Size	Thread Length	Shoulder Dia.	Shoulder Length	Roller Width + Shoulder Length	Lube Size
SCFE-2.00-S	2.000	1.25	0.875	2.00	1.187	1.00	0.03	7/8 - 14	1.00	1.6	0.03	1.28	3/16 Drive
SCFE-2.25-S	2.250	1.25	0.875	2.00	1.187	1.00	0.03	7/8 - 14	1.00	1.6	0.03	1.28	3/16 Drive
SCFE-2.50-S	2.500	1.50	1.000	2.25	1.375	1.13	0.03	1 - 14	1.13	1.9	0.03	1.53	3/16 Drive
SCFE-2.75-S	2.750	1.50	1.000	2.25	1.375	1.13	0.03	1 - 14	1.13	1.9	0.03	1.53	3/16 Drive
SCFE-3.00-S	3.000	1.75	1.250	2.50	1.750	1.25	0.06	1 1/4 - 12	1.25	2.2	0.03	1.78	1/4 Drive
SCFE-3.25-S	3.250	1.75	1.250	2.50	1.750	1.25	0.06	1 1/4 - 12	1.25	2.2	0.03	1.78	1/4 Drive
SCFE-3.50-S	3.500	2.00	1.375	2.75	1.812	1.38	0.06	1 3/8 - 12	1.38	2.5	0.03	2.03	1/4 Drive
SCFE-4.00-S	4.000	2.25	1.500	3.50	2.000	2.00	0.06	1 1/2 - 12	1.50	2.9	0.03	2.28	1/8-27 NPT

Stud Type Cam Follower Part Number	Basic Radial Dynamic Load Rating (lbs) C	Basic Radial Static Load Rating (lbs) Co	Stud Capacity (lbs)	Max. Clamping Torque (in-lbs)*	Seal Type	Bearing Type	Approx. Roller Weight (lbs)
SCFE-2.00-S	8,090	21,140	6,260	1,200	Moly-Filled Nylon Lip	FC Needle	1.45
SCFE-2.25-S	8,090	21,140	6,260	1,200	Moly-Filled Nylon Lip	FC Needle	1.74
SCFE-2.50-S	11,720	32,900	7,820	2,250	Moly-Filled Nylon Lip	FC Needle	2.55
SCFE-2.75-S	11,720	32,900	7,820	2,250	Moly-Filled Nylon Lip	FC Needle	2.98
SCFE-3.00-S	17,620	49,820	13,120	2,250	Moly-Filled Nylon Lip	FC Needle	4.35
SCFE-3.25-S	17,620	49,820	13,120	2,250	Moly-Filled Nylon Lip	FC Needle	4.94
SCFE-3.50-S	23,630	63,250	15,310	5,000	Moly-Filled Nylon Lip	FC Needle	6.44
SCFE-4.00-S	30,270	89,540	17,700	5,000	Moly-Filled Nylon Lip	FC Needle	9.82

ADDITIONAL NOTES

*For lubricated threads, use half the maximum clamping torque value shown.

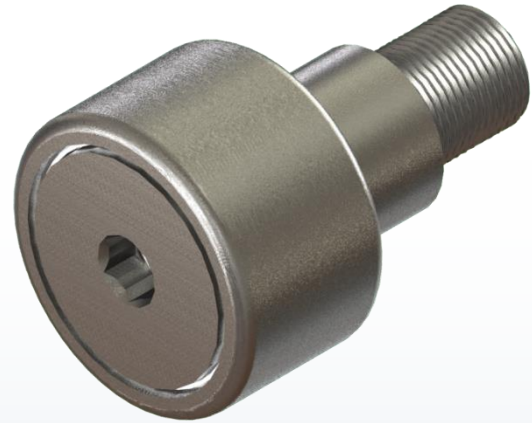
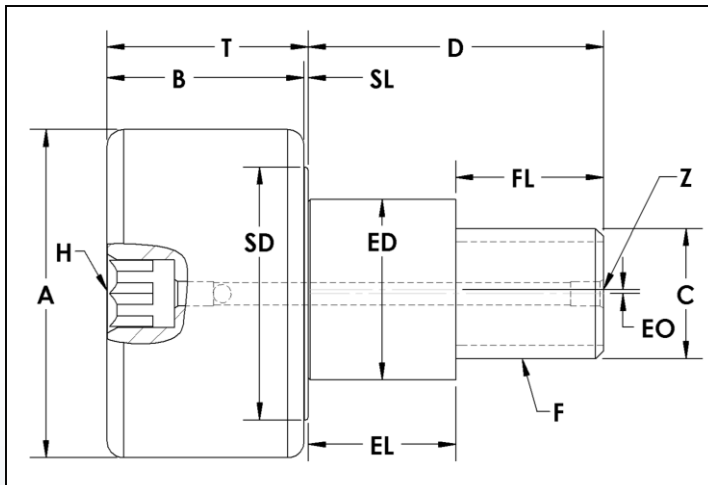
FC Needle: Full Compliment Needle Bearings – Alloy Steel

Grease Fittings & Jam Nut/Lock Washer sets are available at an additional cost.

Specifications subject to change without notice.

SCFE-SH Series Cam Follower Assembly

Plain/Cylindrical – Stud Type Eccentric – Hex Socket
Full Compliment Needle Bearings - Regreasable



Stud Type Cam Follower Part Number	A	B	C	D	ED	EL	EO	F	FL	H	SD	SL	T	Z
	Roller Dia. +.000 -.001	Roller Width	Stud Dia.	Stud Length	Ecc Dia +.000 -.002	Ecc Length	Ecc Offset	Thread Size	Thread Length	Hex Size	Shoulder Dia.	Shoulder Length	Roller Width + Shoulder Length	Lube Size
SCFE-2.00-SH	2.000	1.25	0.875	2.00	1.187	1.00	0.03	7/8 - 14	1.00	7/16	1.6	0.03	1.28	3/16 Drive†
SCFE-2.25-SH	2.250	1.25	0.875	2.00	1.187	1.00	0.03	7/8 - 14	1.00	7/16	1.6	0.03	1.28	3/16 Drive†
SCFE-2.50-SH	2.500	1.50	1.000	2.25	1.375	1.13	0.03	1 - 14	1.13	1/2	1.9	0.03	1.53	3/16 Drive†
SCFE-2.75-SH	2.750	1.50	1.000	2.25	1.375	1.13	0.03	1 - 14	1.13	1/2	1.9	0.03	1.53	3/16 Drive†
SCFE-3.00-SH	3.000	1.75	1.250	2.50	1.750	1.25	0.06	1 1/4 - 12	1.25	3/4	2.2	0.03	1.78	1/4 Drive
SCFE-3.25-SH	3.250	1.75	1.250	2.50	1.750	1.25	0.06	1 1/4 - 12	1.25	3/4	2.2	0.03	1.78	1/4 Drive
SCFE-3.50-SH	3.500	2.00	1.375	2.75	1.812	1.38	0.06	1 3/8 - 12	1.38	3/4	2.5	0.03	2.03	1/4 Drive
SCFE-4.00-SH	4.000	2.25	1.500	3.50	2.000	2.00	0.06	1 1/2 - 12	1.50	3/4	2.9	0.03	2.28	1/8-27 NPT

† Lubrication through threaded end and cross hole only

Stud Type Cam Follower Part Number	Basic Radial Dynamic Load Rating (lbs) C	Basic Radial Static Load Rating (lbs) Co	Stud Capacity (lbs)	Max. Clamping Torque (in-lbs)*	Seal Type	Bearing Type	Approx. Roller Weight (lbs)
SCFE-2.00-SH	8,090	21,140	6,260	1,200	Moly-Filled Nylon Lip	FC Needle	1.45
SCFE-2.25-SH	8,090	21,140	6,260	1,200	Moly-Filled Nylon Lip	FC Needle	1.74
SCFE-2.50-SH	11,720	32,900	7,820	2,250	Moly-Filled Nylon Lip	FC Needle	2.55
SCFE-2.75-SH	11,720	32,900	7,820	2,250	Moly-Filled Nylon Lip	FC Needle	2.98
SCFE-3.00-SH	17,620	49,820	13,120	2,250	Moly-Filled Nylon Lip	FC Needle	4.35
SCFE-3.25-SH	17,620	49,820	13,120	2,250	Moly-Filled Nylon Lip	FC Needle	4.94
SCFE-3.50-SH	23,630	63,250	15,310	5,000	Moly-Filled Nylon Lip	FC Needle	6.44
SCFE-4.00-SH	30,270	89,540	17,700	5,000	Moly-Filled Nylon Lip	FC Needle	9.82

ADDITIONAL NOTES

*For lubricated threads, use half the maximum clamping torque value shown.

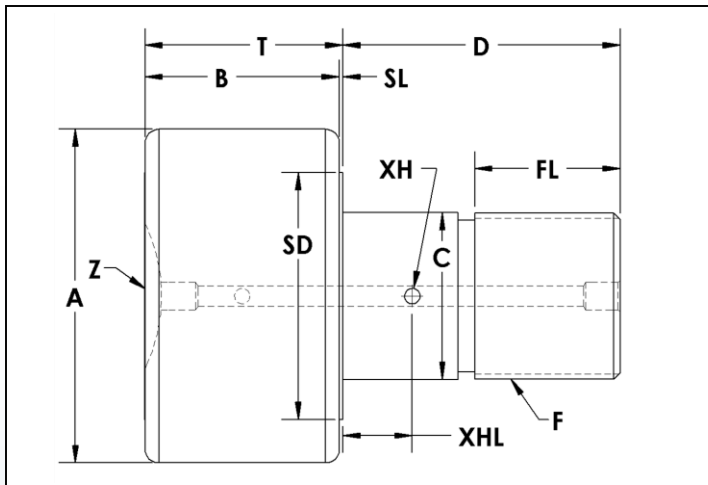
FC Needle: Full Compliment Needle Bearings – Alloy Steel

Grease Fittings & Jam Nut/Lock Washer sets are available at an additional cost.

Specifications subject to change without notice.

HCF-S Series Cam Follower Assembly

Plain/Cylindrical – Heavy Stud Type Concentric – Screwdriver Slot
Full Compliment Needle Bearings - Regreasable



Stud Type Cam Follower Part Number	A	B	C	D	F	FL	SD	SL	T	XH	XHL	Z
	Roller Dia. +.000 -.001	Roller Width	Stud Dia. +.000 -.001	Stud Length	Thread Size	Thread Length	Shoulder Dia.	Shoulder Length	Roller Width + Shoulder Length	Crosshole Dia	Crosshole Location	Lube Size
HCF-2.00-S	2.000	1.25	1.125	2.00	1 1/8 - 12	1.00	1.6	0.03	1.28	0.13	0.50	3/16 Drive
HCF-2.25-S	2.250	1.25	1.125	2.00	1 1/8 - 12	1.00	1.6	0.03	1.28	0.13	0.50	3/16 Drive
HCF-2.50-S	2.500	1.50	1.250	2.25	1 1/4 - 12	1.13	1.9	0.03	1.53	0.13	0.56	3/16 Drive
HCF-2.75-S	2.750	1.50	1.250	2.25	1 1/4 - 12	1.13	1.9	0.03	1.53	0.13	0.56	3/16 Drive
HCF-3.00-S	3.000	1.75	1.500	2.50	1 1/2 - 12	1.31	2.2	0.03	1.78	0.13	0.63	1/4 Drive
HCF-3.25-S	3.250	1.75	1.500	2.50	1 1/2 - 12	1.31	2.2	0.03	1.78	0.13	0.63	1/4 Drive
HCF-3.50-S	3.500	2.00	1.750	2.75	1 3/4 - 12	1.38	2.5	0.03	2.03	0.13	0.69	1/4 Drive
HCF-4.00-S	4.000	2.25	2.000	3.50	2 - 12	1.69	2.9	0.03	2.28	0.13	0.75	1/8-27 NPT

Stud Type Cam Follower Part Number	Basic Radial Dynamic Load Rating (lbs) C	Basic Radial Static Load Rating (lbs) Co	Stud Capacity (lbs)	Max. Clamping Torque (in-lbs)*	Seal Type	Bearing Type	Approx. Roller Weight (lbs)
HCF-2.00-S	8,090	21,140	13,300	1,500	Moly-Filled Nylon Lip	FC Needle	1.53
HCF-2.25-S	8,090	21,140	13,300	1,500	Moly-Filled Nylon Lip	FC Needle	1.81
HCF-2.50-S	11,720	32,900	15,270	2,250	Moly-Filled Nylon Lip	FC Needle	2.61
HCF-2.75-S	11,720	32,900	15,270	2,250	Moly-Filled Nylon Lip	FC Needle	3.03
HCF-3.00-S	17,620	49,820	22,670	3,450	Moly-Filled Nylon Lip	FC Needle	4.38
HCF-3.25-S	17,620	49,820	22,670	3,450	Moly-Filled Nylon Lip	FC Needle	4.91
HCF-3.50-S	23,630	63,250	31,030	5,000	Moly-Filled Nylon Lip	FC Needle	6.73
HCF-4.00-S	30,270	89,540	41,960	5,000	Moly-Filled Nylon Lip	FC Needle	10.45

ADDITIONAL NOTES

*For lubricated threads, use half the maximum clamping torque value shown.

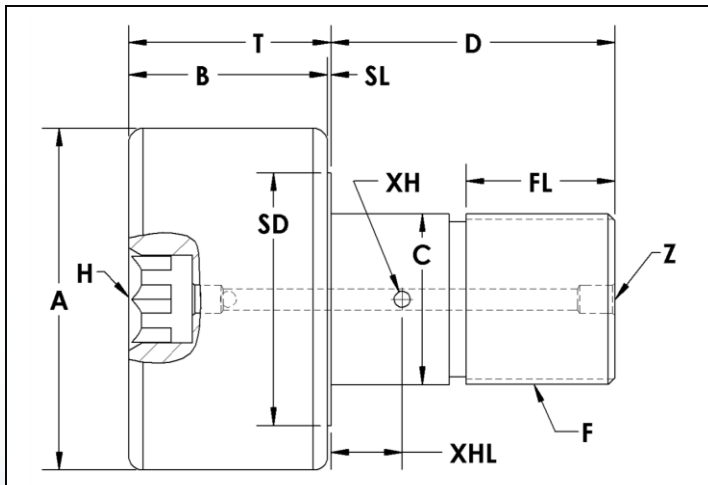
FC Needle: Full Compliment Needle Bearings – Alloy Steel

Grease Fittings & Jam Nut/Lock Washer sets are available at an additional cost.

Specifications subject to change without notice.

HCF-SH Series Cam Follower Assembly

Plain/Cylindrical – Heavy Stud Type Concentric – Hex Socket
Full Compliment Needle Bearings - Regreasable



Stud Type Cam Follower Part Number	A	B	C	D	F	FL	H	SD	SL	T	XH	XHL	Z
	Roller Dia. +.000 -.001	Roller Width	Stud Dia. +.000 -.001	Stud Length	Thread Size	Thread Length	Hex Size	Shoulder Dia.	Shoulder Length	Roller Width + Shoulder Length	Crosshole Dia	Crosshole Location	Lube Size
HCF-2.00-SH	2.000	1.25	1.125	2.00	1 1/8 - 12	1.00	7/16	1.6	0.03	1.28	0.13	0.50	3/16 Drive†
HCF-2.25-SH	2.250	1.25	1.125	2.00	1 1/8 - 12	1.00	7/16	1.6	0.03	1.28	0.13	0.50	3/16 Drive†
HCF-2.50-SH	2.500	1.50	1.250	2.25	1 1/4 - 12	1.13	1/2	1.9	0.03	1.53	0.13	0.56	3/16 Drive†
HCF-2.75-SH	2.750	1.50	1.250	2.25	1 1/4 - 12	1.13	1/2	1.9	0.03	1.53	0.13	0.56	3/16 Drive†
HCF-3.00-SH	3.000	1.75	1.500	2.50	1 1/2 - 12	1.31	3/4	2.2	0.03	1.78	0.13	0.63	1/4 Drive
HCF-3.25-SH	3.250	1.75	1.500	2.50	1 1/2 - 12	1.31	3/4	2.2	0.03	1.78	0.13	0.63	1/4 Drive
HCF-3.50-SH	3.500	2.00	1.750	2.75	1 3/4 - 12	1.38	3/4	2.5	0.03	2.03	0.13	0.69	1/4 Drive
HCF-4.00-SH	4.000	2.25	2.000	3.50	2 - 12	1.69	3/4	2.9	0.03	2.28	0.13	0.75	1/8-27 NPT
HCF-5.00-SH	5.000	2.75	2.500	5.06	2 1/2 - 12	2.56	7/8	3.9	0.06	2.81	0.19	0.88	1/8-27 NPT
HCF-6.00-SH	6.000	3.25	3.000	6.00	3 - 12	3.00	1	4.9	0.06	3.31	0.19	1.00	1/8-27 NPT
HCF-7.00-SH	7.000	3.75	3.500	7.69	3 1/2 - 4	4.13	1 1/4	5.4	0.06	3.81	0.19	1.25	1/4 NPT

† Lubrication through threaded end and cross hole only

Stud Type Cam Follower Part Number	Basic Radial Dynamic Load Rating (lbs) C	Basic Radial Static Load Rating (lbs) Co	Stud Capacity (lbs)	Max. Clamping Torque (in-lbs)*	Seal Type	Bearing Type	Approx. Roller Weight (lbs)
HCF-2.00-SH	8,090	21,140	13,300	1,500	Moly-Filled Nylon Lip	FC Needle	1.53
HCF-2.25-SH	8,090	21,140	13,300	1,500	Moly-Filled Nylon Lip	FC Needle	1.81
HCF-2.50-SH	11,720	32,900	15,270	2,250	Moly-Filled Nylon Lip	FC Needle	2.61
HCF-2.75-SH	11,720	32,900	15,270	2,250	Moly-Filled Nylon Lip	FC Needle	3.03
HCF-3.00-SH	17,620	49,820	22,670	3,450	Moly-Filled Nylon Lip	FC Needle	4.38
HCF-3.25-SH	17,620	49,820	22,670	3,450	Moly-Filled Nylon Lip	FC Needle	4.91
HCF-3.50-SH	23,630	63,250	31,030	5,000	Moly-Filled Nylon Lip	FC Needle	6.73
HCF-4.00-SH	30,270	89,540	41,960	5,000	Moly-Filled Nylon Lip	FC Needle	10.45
HCF-5.00-SH	53,590	135,900	66,490	5,000	Moly-Filled Nylon Lip	FC Needle	20.71
HCF-6.00-SH	61,690	160,900	97,540	5,000	Moly-Filled Nylon Lip	FC Needle	35.34
HCF-7.00-SH	81,860	213,860	134,570	5,000	Moly-Filled Nylon Lip	FC Needle	58.19

ADDITIONAL NOTES

*For lubricated threads, use half the maximum clamping torque value shown.

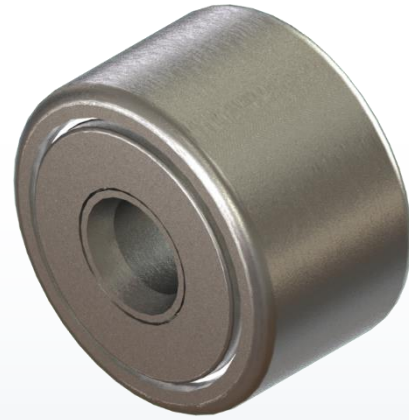
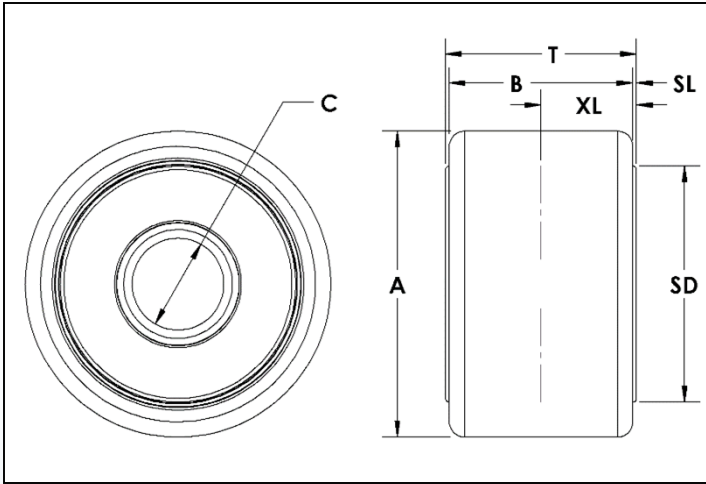
FC Needle: Full Compliment Needle Bearings – Alloy Steel

Grease Fittings & Jam Nut/Lock Washer sets are available at an additional cost.

Specifications subject to change without notice.

YCF-S Series Cam Follower Assembly

Plain/Cylindrical – Yoke Type Concentric
Full Compliment Needle Bearings - Regreasable



Yoke Type Cam Follower Part Number	A Roller Dia. +.000 -.001	B Roller Width	C Bore Dia. +.0007 -.0000	SD Shoulder Dia.	SL Shoulder Length	T Inner Race Width +.005 -.010	XL Grease Groove Location
YCF-2.00-S	2.000	1.25	0.6250	1.6	0.03	1.313	0.66
YCF-2.25-S	2.250	1.25	0.6250	1.6	0.03	1.313	0.66
YCF-2.50-S	2.500	1.50	0.7500	1.9	0.03	1.563	0.78
YCF-2.75-S	2.750	1.50	0.7500	1.9	0.03	1.563	0.78
YCF-3.00-S	3.000	1.75	1.0000	2.2	0.03	1.813	0.91
YCF-3.25-S	3.250	1.75	1.0000	2.2	0.03	1.813	0.91
YCF-3.50-S	3.500	2.00	1.1250	2.5	0.03	2.063	1.03
YCF-4.00-S	4.000	2.25	1.2500	2.9	0.03	2.313	1.16
YCF-5.00-S	5.000	2.75	1.7500	3.9	0.06	2.875	1.44
YCF-6.00-S	6.000	3.25	2.2500	4.9	0.06	3.375	1.69
YCF-7.00-S	7.000	3.75	2.7500	5.4	0.06	3.875	1.94
YCF-8.00-S	8.000	4.25	3.2550	6.4	0.13	4.500	2.25
YCF-9.00-S	9.000	4.75	3.7550	7.4	0.13	5.000	2.50
YCF-10.00-S	10.000	5.25	4.2550	7.4	0.13	5.500	2.75

Optional PCI Yoke Shaft	Optional PCI Eccentric Yoke Shaft
YSH-.625-R	YSHE-.625-R
YSH-.625-R	YSHE-.625-R
YSH-.750-R	YSHE-.750-R
YSH-.750-R	YSHE-.750-R
YSH-1.000-R	YSHE-1.000-R
YSH-1.000-R	YSHE-1.000-R
YSH-1.125-R	YSHE-1.125-R
YSH-1.250-R	YSHE-1.250-R
YSH-1.750-R	YSHE-1.750-R
YSH-2.250-R	YSHE-2.250-R
YSH-2.750-R	YSHE-2.750-R
YSH-3.250-R	-
YSH-3.750-R	-
YSH-4.250-R	-

Yoke Type Cam Follower Part Number	Basic Radial Dynamic Load Rating (lbs) C	Basic Radial Static Load Rating (lbs) Co	Seal Type	Bearing Type	Approx. Roller Weight (lbs)
YCF-2.00-S	8,090	21,140	Moly-Filled Nylon Lip	FC Needle	0.91
YCF-2.25-S	8,090	21,140	Moly-Filled Nylon Lip	FC Needle	1.20
YCF-2.50-S	11,720	32,900	Moly-Filled Nylon Lip	FC Needle	1.72
YCF-2.75-S	11,720	32,900	Moly-Filled Nylon Lip	FC Needle	2.15
YCF-3.00-S	17,620	49,820	Moly-Filled Nylon Lip	FC Needle	2.83
YCF-3.25-S	17,620	49,820	Moly-Filled Nylon Lip	FC Needle	3.41
YCF-3.50-S	23,630	63,250	Moly-Filled Nylon Lip	FC Needle	4.48
YCF-4.00-S	30,270	89,540	Moly-Filled Nylon Lip	FC Needle	6.73
YCF-5.00-S	53,590	135,900	Moly-Filled Nylon Lip	FC Needle	12.49
YCF-6.00-S	61,690	160,900	Moly-Filled Nylon Lip	FC Needle	20.72
YCF-7.00-S	81,860	213,860	Moly-Filled Nylon Lip	FC Needle	32.61
YCF-8.00-S	111,400	288,200	Moly-Filled Nylon Lip	FC Needle	47.46
YCF-9.00-S	151,400	366,860	Moly-Filled Nylon Lip	FC Needle	65.68
YCF-10.00-S	160,480	431,130	Moly-Filled Nylon Lip	FC Needle	89.56

ADDITIONAL NOTES

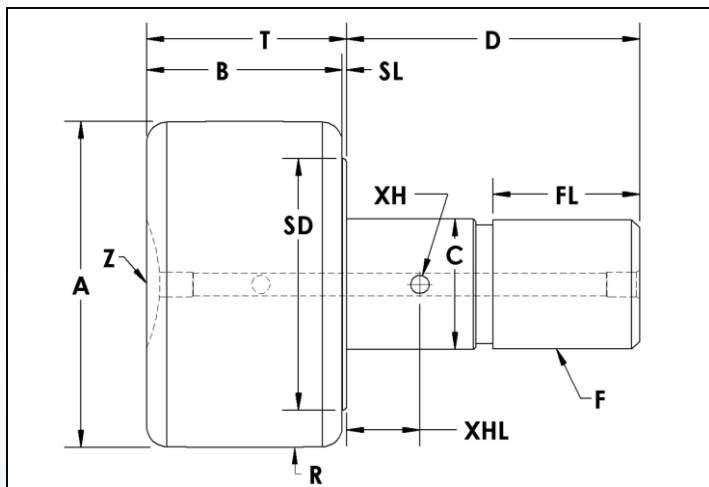
FC Needle: Full Compliment
Needle Bearings – Alloy Steel

PCI Heavy Duty Yoke Shafts are
available at an additional cost.
See YSH page for details.

Specifications subject to
change without notice.

SCCF-S Series Cam Follower Assembly

Crowned/Spherical – Stud Type Concentric – Screwdriver Slot
Full Compliment Needle Bearings - Regreasable



Stud Type Cam Follower Part Number	A Roller Dia. +.000 -.001	B Roller Width	C Stud Dia. +.000 -.001	D Stud Length	F Thread Size	FL Thread Length	R Crown Radius	SD Shoulder Dia.	SL Shoulder Length	T Roller Width + Shoulder Length	XH Crosshole Dia	XHL Crosshole Location	Z Lube Size
SCCF-2.00-S	2.000	1.25	0.875	2.00	7/8 - 14	1.00	24	1.6	0.03	1.28	0.13	0.50	3/16 Drive
SCCF-2.25-S	2.250	1.25	0.875	2.00	7/8 - 14	1.00	24	1.6	0.03	1.28	0.13	0.50	3/16 Drive
SCCF-2.50-S	2.500	1.50	1.000	2.25	1 - 14	1.13	30	1.9	0.03	1.53	0.13	0.56	3/16 Drive
SCCF-2.75-S	2.750	1.50	1.000	2.25	1 - 14	1.13	30	1.9	0.03	1.53	0.13	0.56	3/16 Drive
SCCF-3.00-S	3.000	1.75	1.250	2.50	1 1/4 - 12	1.25	30	2.2	0.03	1.78	0.13	0.63	1/4 Drive
SCCF-3.25-S	3.250	1.75	1.250	2.50	1 1/4 - 12	1.25	30	2.2	0.03	1.78	0.13	0.63	1/4 Drive
SCCF-3.50-S	3.500	2.00	1.375	2.75	1 3/8 - 12	1.38	30	2.5	0.03	2.03	0.13	0.69	1/4 Drive
SCCF-4.00-S	4.000	2.25	1.500	3.50	1 1/2 - 12	1.50	30	2.5	0.03	2.28	0.13	0.75	1/8-27 NPT

Stud Type Cam Follower Part Number	Basic Radial Dynamic Load Rating (lbs) C	Basic Radial Static Load Rating (lbs) Co	Stud Capacity (lbs)	Max. Clamping Torque (in-lbs)*	Seal Type	Bearing Type	Approx. Roller Weight (lbs)
SCCF-2.00-S	8,090	21,140	6,260	1,200	Moly-Filled Nylon Lip	FC Needle	1.30
SCCF-2.25-S	8,090	21,140	6,260	1,200	Moly-Filled Nylon Lip	FC Needle	1.58
SCCF-2.50-S	11,720	32,900	7,820	2,250	Moly-Filled Nylon Lip	FC Needle	2.34
SCCF-2.75-S	11,720	32,900	7,820	2,250	Moly-Filled Nylon Lip	FC Needle	2.76
SCCF-3.00-S	17,620	49,820	13,120	2,250	Moly-Filled Nylon Lip	FC Needle	3.91
SCCF-3.25-S	17,620	49,820	13,120	2,250	Moly-Filled Nylon Lip	FC Needle	4.51
SCCF-3.50-S	23,630	63,250	15,310	5,000	Moly-Filled Nylon Lip	FC Needle	5.99
SCCF-4.00-S	30,270	89,540	17,700	5,000	Moly-Filled Nylon Lip	FC Needle	8.97

ADDITIONAL NOTES

*For lubricated threads, use half the maximum clamping torque value shown.

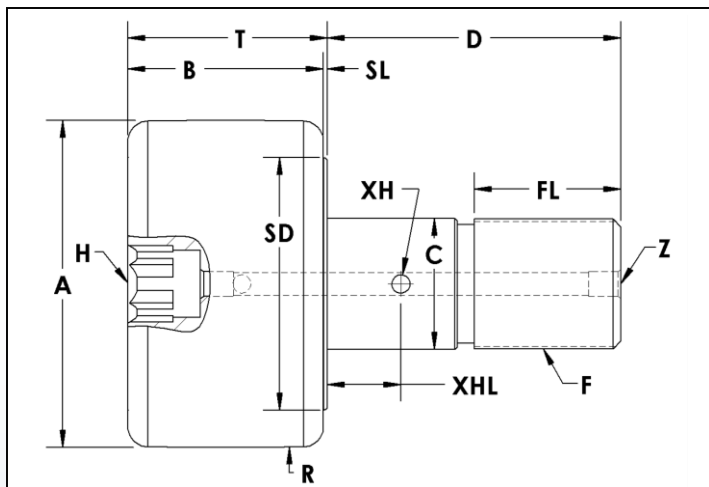
FC Needle: Full Compliment Needle Bearings – Alloy Steel

Grease Fittings & Jam Nut/Lock Washer sets are available at an additional cost.

Specifications subject to change without notice.

SCCF-SH Series Cam Follower Assembly

Crowned/Spherical – Stud Type Concentric – Hex Socket
Full Compliment Needle Bearings - Regreasable



Stud Type Cam Follower Part Number	A	B	C	D	F	FL	H	R	SD	SL	T	XH	XHL	Z
	Roller Dia. +.000 -.001	Roller Width	Stud Dia. +.000 -.001	Stud Length	Thread Size	Thread Length	Hex Size	Crown Radius	Shoulder Dia.	Shoulder Length	Roller Width + Shoulder Length	Crosshole Dia	Crosshole Location	Lube Size
SCCF-2.00-SH	2.000	1.25	0.875	2.00	7/8 - 14	1.00	7/16	24	1.6	0.03	1.28	0.13	0.50	3/16 Drive†
SCCF-2.25-SH	2.250	1.25	0.875	2.00	7/8 - 14	1.00	7/16	24	1.6	0.03	1.28	0.13	0.50	3/16 Drive†
SCCF-2.50-SH	2.500	1.50	1.000	2.25	1 - 14	1.13	1/2	30	1.9	0.03	1.53	0.13	0.56	3/16 Drive†
SCCF-2.75-SH	2.750	1.50	1.000	2.25	1 - 14	1.13	1/2	30	1.9	0.03	1.53	0.13	0.56	3/16 Drive†
SCCF-3.00-SH	3.000	1.75	1.250	2.50	1 1/4 - 12	1.25	3/4	30	2.2	0.03	1.78	0.13	0.63	1/4 Drive
SCCF-3.25-SH	3.250	1.75	1.250	2.50	1 1/4 - 12	1.25	3/4	30	2.2	0.03	1.78	0.13	0.63	1/4 Drive
SCCF-3.50-SH	3.500	2.00	1.375	2.75	1 3/8 - 12	1.38	3/4	30	2.5	0.03	2.03	0.13	0.69	1/4 Drive
SCCF-4.00-SH	4.000	2.25	1.500	3.50	1 1/2 - 12	1.50	3/4	30	2.5	0.03	2.28	0.13	0.75	1/8-27 NPT
SCCF-5.00-SH	5.000	2.75	2.000	5.06	2 - 12	2.56	7/8	48	3.9	0.06	2.81	0.19	0.88	1/8-27 NPT
SCCF-6.00-SH	6.000	3.25	2.500	6.00	2 1/2 - 12	3.00	1	56	4.9	0.06	3.31	0.19	1.00	1/8-27 NPT
SCCF-7.00-SH	7.000	3.75	3.000	7.69	3 - 12	4.13	1 1/4	60	5.4	0.06	3.81	0.19	1.25	1/4 NPT
SCCF-8.00-SH	8.000	4.25	3.250	8.50	3 1/4 - 4	4.25	1 1/4	40	6.4	0.13	5.13‡	-	-	1/4 NPT
SCCF-9.00-SH	9.000	4.75	3.750	9.50	3 1/2 - 4	4.75	1 1/4	40	7.4	0.13	5.63‡	-	-	1/4 NPT
SCCF-10.00-SH	10.000	5.25	4.250	10.00	3 1/2 - 4	4.75	1 1/4	40	7.4	0.13	6.13‡	-	-	1/4 NPT

† Lubrication through threaded end and cross hole only

‡ Stud extends .750" beyond the roller body on end opposite the threads

Stud Type Cam Follower Part Number	Basic Radial Dynamic Load Rating (lbs) C	Basic Radial Static Load Rating (lbs) Co	Stud Capacity (lbs)	Max. Clamping Torque (in-lbs)*	Seal Type	Bearing Type	Approx. Roller Weight (lbs)
SCCF-2.00-SH	8,090	21,140	6,260	1,200	Moly-Filled Nylon Lip	FC Needle	1.30
SCCF-2.25-SH	8,090	21,140	6,260	1,200	Moly-Filled Nylon Lip	FC Needle	1.58
SCCF-2.50-SH	11,720	32,900	7,820	2,250	Moly-Filled Nylon Lip	FC Needle	2.34
SCCF-2.75-SH	11,720	32,900	7,820	2,250	Moly-Filled Nylon Lip	FC Needle	2.76
SCCF-3.00-SH	17,620	49,820	13,120	2,250	Moly-Filled Nylon Lip	FC Needle	3.91
SCCF-3.25-SH	17,620	49,820	13,120	2,250	Moly-Filled Nylon Lip	FC Needle	4.51
SCCF-3.50-SH	23,630	63,250	15,310	5,000	Moly-Filled Nylon Lip	FC Needle	5.99
SCCF-4.00-SH	30,270	89,540	17,700	5,000	Moly-Filled Nylon Lip	FC Needle	8.97
SCCF-5.00-SH	53,590	135,900	34,040	5,000	Moly-Filled Nylon Lip	FC Needle	18.16
SCCF-6.00-SH	61,690	160,900	56,450	5,000	Moly-Filled Nylon Lip	FC Needle	31.66
SCCF-7.00-SH	81,860	213,860	84,740	5,000	Moly-Filled Nylon Lip	FC Needle	52.93
SCCF-8.00-SH	111,400	288,200	80,020	5,000	Moly-Filled Nylon Lip	FC Needle	81.61
SCCF-9.00-SH	151,400	366,860	112,010	5,000	Moly-Filled Nylon Lip	FC Needle	114.15
SCCF-10.00-SH	160,480	431,130	149,750	5,000	Moly-Filled Nylon Lip	FC Needle	150.38

ADDITIONAL NOTES

*For lubricated threads, use half the maximum clamping torque value shown.

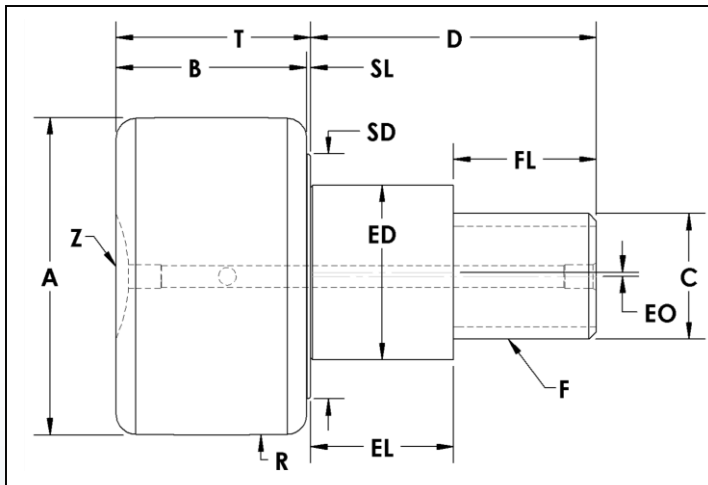
FC Needle: Full Compliment Needle Bearings – Alloy Steel

Grease Fittings & Jam Nut/Lock Washer sets are available at an additional cost.

Specifications subject to change without notice.

SCCFE-S Series Cam Follower Assembly

Crowned/Spherical – Stud Type Eccentric – Screwdriver Slot
Full Compliment Needle Bearings - Regreasable



Stud Type Cam Follower Part Number	A Roller Dia. +.000 -.001	B Roller Width	C Stud Dia.	D Stud Length	ED Ecc Dia +.000 -.002	EL Ecc Length	EO Ecc Offset	F Thread Size	FL Thread Length	R Crown Radius	SD Shoulder Dia.	SL Shoulder Length	T Roller Width + Shoulder Length	Z Lube Size
SCCFE-2.00-S	2.000	1.25	0.875	2.00	1.187	1.00	0.03	7/8 - 14	1.00	24	1.6	0.03	1.28	3/16 Drive
SCCFE-2.25-S	2.250	1.25	0.875	2.00	1.187	1.00	0.03	7/8 - 14	1.00	24	1.6	0.03	1.28	3/16 Drive
SCCFE-2.50-S	2.500	1.50	1.000	2.25	1.375	1.13	0.03	1 - 14	1.13	30	1.9	0.03	1.53	3/16 Drive
SCCFE-2.75-S	2.750	1.50	1.000	2.25	1.375	1.13	0.03	1 - 14	1.13	30	1.9	0.03	1.53	3/16 Drive
SCCFE-3.00-S	3.000	1.75	1.250	2.50	1.750	1.25	0.06	1 1/4 - 12	1.25	30	2.2	0.03	1.78	1/4 Drive
SCCFE-3.25-S	3.250	1.75	1.250	2.50	1.750	1.25	0.06	1 1/4 - 12	1.25	30	2.2	0.03	1.78	1/4 Drive
SCCFE-3.50-S	3.500	2.00	1.375	2.75	1.812	1.38	0.06	1 3/8 - 12	1.38	30	2.5	0.03	2.03	1/4 Drive
SCCFE-4.00-S	4.000	2.25	1.500	3.50	2.000	2.00	0.06	1 1/2 - 12	1.50	30	2.9	0.03	2.28	1/8-27 NPT

Stud Type Cam Follower Part Number	Basic Radial Dynamic Load Rating (lbs) C	Basic Radial Static Load Rating (lbs) Co	Stud Capacity (lbs)	Max. Clamping Torque (in-lbs)*	Seal Type	Bearing Type	Approx. Roller Weight (lbs)
SCCFE-2.00-S	8,090	21,140	6,260	1,200	Moly-Filled Nylon Lip	FC Needle	1.43
SCCFE-2.25-S	8,090	21,140	6,260	1,200	Moly-Filled Nylon Lip	FC Needle	1.72
SCCFE-2.50-S	11,720	32,900	7,820	2,250	Moly-Filled Nylon Lip	FC Needle	2.54
SCCFE-2.75-S	11,720	32,900	7,820	2,250	Moly-Filled Nylon Lip	FC Needle	2.96
SCCFE-3.00-S	17,620	49,820	13,120	2,250	Moly-Filled Nylon Lip	FC Needle	4.25
SCCFE-3.25-S	17,620	49,820	13,120	2,250	Moly-Filled Nylon Lip	FC Needle	4.91
SCCFE-3.50-S	23,630	63,250	15,310	5,000	Moly-Filled Nylon Lip	FC Needle	6.39
SCCFE-4.00-S	30,270	89,540	17,700	5,000	Moly-Filled Nylon Lip	FC Needle	9.82

ADDITIONAL NOTES

*For lubricated threads, use half the maximum clamping torque value shown.

FC Needle: Full Compliment Needle Bearings – Alloy Steel

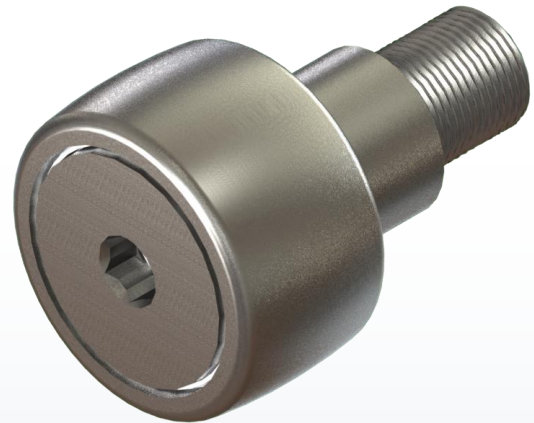
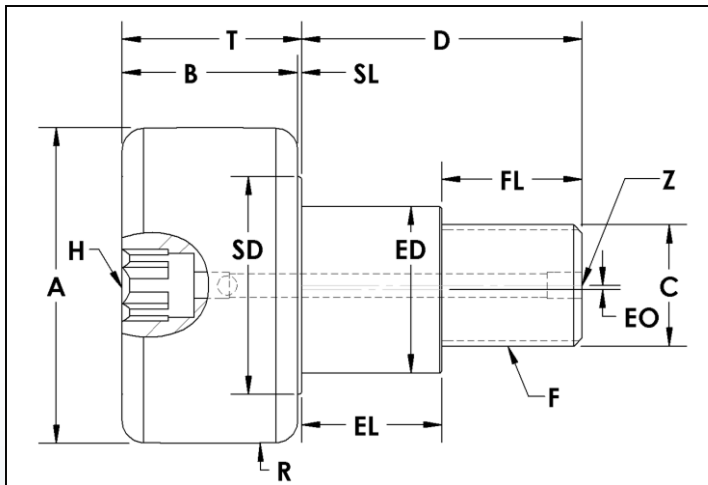
Grease Fittings & Jam Nut/Lock Washer sets are available at an additional cost.

Specifications subject to change without notice.

SCCFE-SH Series Cam Follower Assembly

Crowned/Spherical – Stud Type Eccentric – Hex Socket
Full Compliment Needle Bearings - Regreasable

989.358.6148
www.pcimfg.com



Stud Type Cam Follower Part Number	A	B	C	D	ED	EL	EO	F	FL	H	R	SD	SL	T	Z
	Roller Dia. +.000 -.001	Roller Width	Stud Dia.	Stud Length	Ecc Dia +.000 -.002	Ecc Length	Ecc Offset	Thread Size	Thread Length	Hex Size	Crown Radius	Shoulder Dia.	Shoulder Length	Roller Width + Shoulder Length	Lube Size
SCCFE-2.00-SH	2.000	1.25	0.875	2.00	1.187	1.00	0.03	7/8 - 14	1.00	7/16	24	1.6	0.03	1.28	3/16 Drive†
SCCFE-2.25-SH	2.250	1.25	0.875	2.00	1.187	1.00	0.03	7/8 - 14	1.00	7/16	24	1.6	0.03	1.28	3/16 Drive†
SCCFE-2.50-SH	2.500	1.50	1.000	2.25	1.375	1.13	0.03	1 - 14	1.13	1/2	30	1.9	0.03	1.53	3/16 Drive†
SCCFE-2.75-SH	2.750	1.50	1.000	2.25	1.375	1.13	0.03	1 - 14	1.13	1/2	30	1.9	0.03	1.53	3/16 Drive†
SCCFE-3.00-SH	3.000	1.75	1.250	2.50	1.750	1.25	0.06	1 1/4 - 12	1.25	3/4	30	2.2	0.03	1.78	1/4 Drive
SCCFE-3.25-SH	3.250	1.75	1.250	2.50	1.750	1.25	0.06	1 1/4 - 12	1.25	3/4	30	2.2	0.03	1.78	1/4 Drive
SCCFE-3.50-SH	3.500	2.00	1.375	2.75	1.812	1.38	0.06	1 3/8 - 12	1.38	3/4	30	2.5	0.03	2.03	1/4 Drive
SCCFE-4.00-SH	4.000	2.25	1.500	3.50	2.000	2.00	0.06	1 1/2 - 12	1.50	3/4	30	2.9	0.03	2.28	1/8-27 NPT

† Lubrication through threaded end and cross hole only

Stud Type Cam Follower Part Number	Basic Radial Dynamic Load Rating (lbs) C	Basic Radial Static Load Rating (lbs) Co	Stud Capacity (lbs)	Max. Clamping Torque (in-lbs)*	Seal Type	Bearing Type	Approx. Roller Weight (lbs)
SCCFE-2.00-SH	8,090	21,140	6,260	1,200	Moly-Filled Nylon Lip	FC Needle	1.43
SCCFE-2.25-SH	8,090	21,140	6,260	1,200	Moly-Filled Nylon Lip	FC Needle	1.72
SCCFE-2.50-SH	11,720	32,900	7,820	2,250	Moly-Filled Nylon Lip	FC Needle	2.54
SCCFE-2.75-SH	11,720	32,900	7,820	2,250	Moly-Filled Nylon Lip	FC Needle	2.96
SCCFE-3.00-SH	17,620	49,820	13,120	2,250	Moly-Filled Nylon Lip	FC Needle	4.25
SCCFE-3.25-SH	17,620	49,820	13,120	2,250	Moly-Filled Nylon Lip	FC Needle	4.91
SCCFE-3.50-SH	23,630	63,250	15,310	5,000	Moly-Filled Nylon Lip	FC Needle	6.39
SCCFE-4.00-SH	30,270	89,540	17,700	5,000	Moly-Filled Nylon Lip	FC Needle	9.82

ADDITIONAL NOTES

*For lubricated threads, use half the maximum clamping torque value shown.

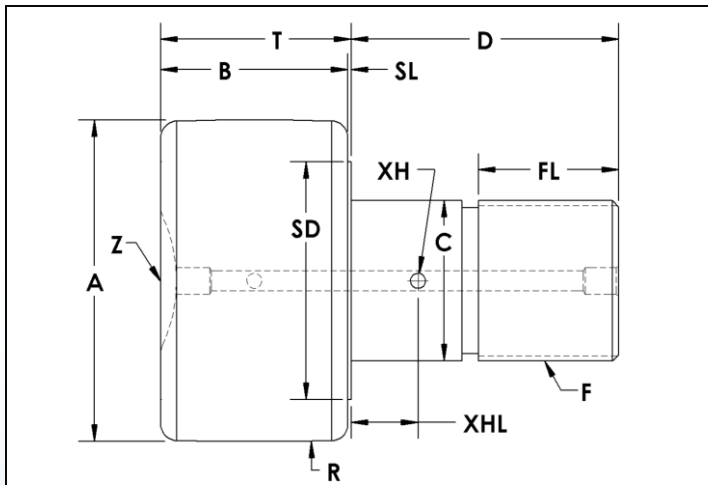
FC Needle: Full Compliment Needle Bearings – Alloy Steel

Grease Fittings & Jam Nut/Lock Washer sets are available at an additional cost.

Specifications subject to change without notice.

HCCF-S Series Cam Follower Assembly

Crowned/Spherical – Heavy Stud Type Concentric – Screwdriver Slot
Full Compliment Needle Bearings - Regreasable



Stud Type Cam Follower Part Number	A Roller Dia. +.000 -.001	B Roller Width	C Stud Dia. +.000 -.001	D Stud Length	F Thread Size	FL Thread Length	R Crown Radius	SD Shoulder Dia.	SL Shoulder Length	T Roller Width + Shoulder Length	XH Crosshole Dia	XHL Crosshole Location	Z Lube Size
HCCF-2.00-S	2.000	1.25	1.125	2.00	1 1/8 - 12	1.00	24	1.6	0.03	1.28	0.13	0.50	3/16 Drive
HCCF-2.25-S	2.250	1.25	1.125	2.00	1 1/8 - 12	1.00	24	1.6	0.03	1.28	0.13	0.50	3/16 Drive
HCCF-2.50-S	2.500	1.50	1.250	2.25	1 1/4 - 12	1.13	30	1.9	0.03	1.53	0.13	0.56	3/16 Drive
HCCF-2.75-S	2.750	1.50	1.250	2.25	1 1/4 - 12	1.13	30	1.9	0.03	1.53	0.13	0.56	3/16 Drive
HCCF-3.00-S	3.000	1.75	1.500	2.50	1 1/2 - 12	1.31	30	2.2	0.03	1.78	0.13	0.63	1/4 Drive
HCCF-3.25-S	3.250	1.75	1.500	2.50	1 1/2 - 12	1.31	30	2.2	0.03	1.78	0.13	0.63	1/4 Drive
HCCF-3.50-S	3.500	2.00	1.750	2.75	1 3/4 - 12	1.38	30	2.5	0.03	2.03	0.13	0.69	1/4 Drive
HCCF-4.00-S	4.000	2.25	2.000	3.50	2 - 12	1.69	30	2.9	0.03	2.28	0.13	0.75	1/8-27 NPT

Stud Type Cam Follower Part Number	Basic Radial Dynamic Load Rating (lbs) C	Basic Radial Static Load Rating (lbs) Co	Stud Capacity (lbs)	Max. Clampin g Torque (in-lbs)*	Seal Type	Bearing Type	Approx. Roller Weight (lbs)
HCCF-2.00-S	8,090	21,140	13,300	1,500	Moly-Filled Nylon Lip	FC Needle	1.51
HCCF-2.25-S	8,090	21,140	13,300	1,500	Moly-Filled Nylon Lip	FC Needle	1.78
HCCF-2.50-S	11,720	32,900	15,270	2,250	Moly-Filled Nylon Lip	FC Needle	2.59
HCCF-2.75-S	11,720	32,900	15,270	2,250	Moly-Filled Nylon Lip	FC Needle	3.01
HCCF-3.00-S	17,620	49,820	22,670	3,450	Moly-Filled Nylon Lip	FC Needle	4.28
HCCF-3.25-S	17,620	49,820	22,670	3,450	Moly-Filled Nylon Lip	FC Needle	4.88
HCCF-3.50-S	23,630	63,250	31,030	5,000	Moly-Filled Nylon Lip	FC Needle	6.68
HCCF-4.00-S	30,270	89,540	41,960	5,000	Moly-Filled Nylon Lip	FC Needle	10.29

ADDITIONAL NOTES

*For lubricated threads, use half the maximum clamping torque value shown.

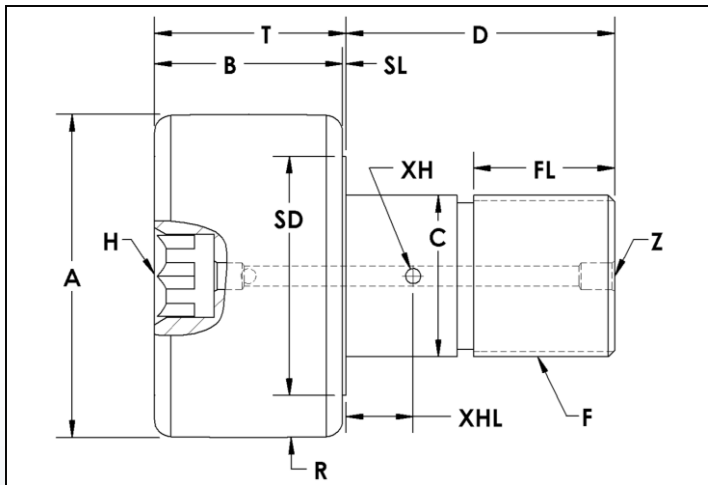
FC Needle: Full Compliment Needle Bearings – Alloy Steel

Grease Fittings & Jam Nut/Lock Washer sets are available at an additional cost.

Specifications subject to change without notice.

HCCF-SH Series Cam Follower Assembly

Crowned/Spherical – Heavy Stud Type Concentric – Hex Socket
Full Compliment Needle Bearings - Regreasable



Stud Type Cam Follower Part Number	A	B	C	D	F	FL	H	R	SD	SL	T	XH	XHL	Z
	Roller Dia. +.000 -.001	Roller Width	Stud Dia. +.000 -.001	Stud Length	Thread Size	Thread Length	Hex Size	Crown Radius	Shoulder Dia.	Shoulder Length	Roller Width + Shoulder Length	Crosshole Dia	Crosshole Location	Lube Size
HCCF-2.00-SH	2.000	1.25	1.125	2.00	1 1/8 - 12	1.00	7/16	24	1.6	0.03	1.28	0.13	0.50	3/16 Drive†
HCCF-2.25-SH	2.250	1.25	1.125	2.00	1 1/8 - 12	1.00	7/16	24	1.6	0.03	1.28	0.13	0.50	3/16 Drive†
HCCF-2.50-SH	2.500	1.50	1.250	2.25	1 1/4 - 12	1.13	1/2	30	1.9	0.03	1.53	0.13	0.56	3/16 Drive†
HCCF-2.75-SH	2.750	1.50	1.250	2.25	1 1/4 - 12	1.13	1/2	30	1.9	0.03	1.53	0.13	0.56	3/16 Drive†
HCCF-3.00-SH	3.000	1.75	1.500	2.50	1 1/2 - 12	1.31	3/4	30	2.2	0.03	1.78	0.13	0.63	1/4 Drive
HCCF-3.25-SH	3.250	1.75	1.500	2.50	1 1/2 - 12	1.31	3/4	30	2.2	0.03	1.78	0.13	0.63	1/4 Drive
HCCF-3.50-SH	3.500	2.00	1.750	2.75	1 3/4 - 12	1.38	3/4	30	2.5	0.03	2.03	0.13	0.69	1/4 Drive
HCCF-4.00-SH	4.000	2.25	2.000	3.50	2 - 12	1.69	3/4	30	2.9	0.03	2.28	0.13	0.75	1/8-27 NPT
HCCF-5.00-SH	5.000	2.75	2.500	5.06	2 1/2 - 12	2.56	7/8	48	3.9	0.06	2.81	0.19	0.88	1/8-27 NPT
HCCF-6.00-SH	6.000	3.25	3.000	6.00	3 - 12	3.00	1	56	4.9	0.06	3.31	0.19	1.00	1/8-27 NPT
HCCF-7.00-SH	7.000	3.75	3.500	7.69	3 1/2 - 4	4.13	1 1/4	60	5.4	0.06	3.81	0.19	1.25	1/4 NPT

† Lubrication through threaded end and cross hole only

Stud Type Cam Follower Part Number	Basic Radial Dynamic Load Rating (lbs) C	Basic Radial Static Load Rating (lbs) Co	Stud Capacity (lbs)	Max. Clamping Torque (in-lbs)*	Seal Type	Bearing Type	Approx. Roller Weight (lbs)
HCCF-2.00-SH	8,090	21,140	13,300	1,500	Moly-Filled Nylon Lip	FC Needle	1.51
HCCF-2.25-SH	8,090	21,140	13,300	1,500	Moly-Filled Nylon Lip	FC Needle	1.78
HCCF-2.50-SH	11,720	32,900	15,270	2,250	Moly-Filled Nylon Lip	FC Needle	2.59
HCCF-2.75-SH	11,720	32,900	15,270	2,250	Moly-Filled Nylon Lip	FC Needle	3.01
HCCF-3.00-SH	17,620	49,820	22,670	3,450	Moly-Filled Nylon Lip	FC Needle	4.28
HCCF-3.25-SH	17,620	49,820	22,670	3,450	Moly-Filled Nylon Lip	FC Needle	4.88
HCCF-3.50-SH	23,630	63,250	31,030	5,000	Moly-Filled Nylon Lip	FC Needle	6.68
HCCF-4.00-SH	30,270	89,540	41,960	5,000	Moly-Filled Nylon Lip	FC Needle	10.29
HCCF-5.00-SH	53,590	135,900	66,490	5,000	Moly-Filled Nylon Lip	FC Needle	20.64
HCCF-6.00-SH	61,690	160,900	97,540	5,000	Moly-Filled Nylon Lip	FC Needle	35.23
HCCF-7.00-SH	81,860	213,860	134,570	5,000	Moly-Filled Nylon Lip	FC Needle	57.74

ADDITIONAL NOTES

*For lubricated threads, use half the maximum clamping torque value shown.

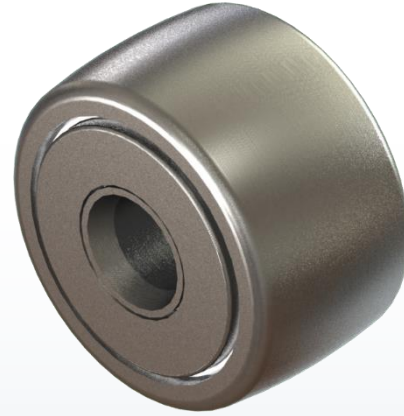
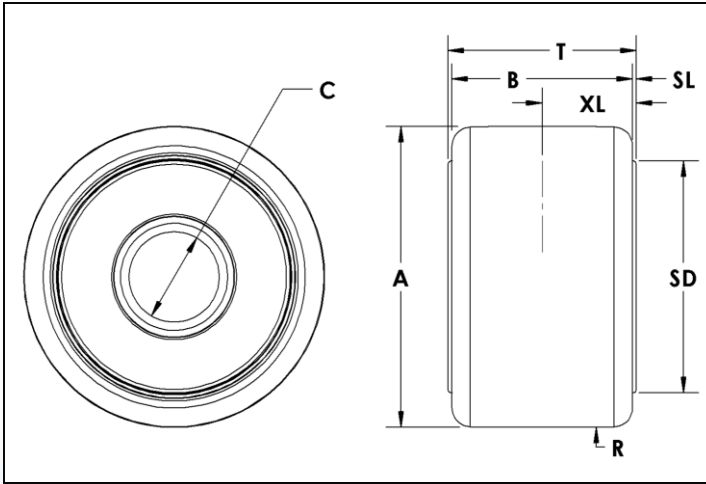
FC Needle: Full Compliment Needle Bearings – Alloy Steel

Grease Fittings & Jam Nut/Lock Washer sets are available at an additional cost.

Specifications subject to change without notice.

YCCF-S Series Cam Follower Assembly

Crowned/Spherical – Yoke Type Concentric
Full Compliment Needle Bearings - Regreasable



Yoke Type Cam Follower Part Number	A Roller Dia. +.000 -.001	B Roller Width	C Bore Dia. +.0007 -.0000	R Crown Radius	SD Shoulder Dia.	SL Shoulder Length	T Inner Race Width +.005 -.010	XL Grease Groove Location
YCCF-2.00-S	2.000	1.25	0.6250	24	1.6	0.03	1.313	0.66
YCCF-2.25-S	2.250	1.25	0.6250	24	1.6	0.03	1.313	0.66
YCCF-2.50-S	2.500	1.50	0.7500	30	1.9	0.03	1.563	0.78
YCCF-2.75-S	2.750	1.50	0.7500	30	1.9	0.03	1.563	0.78
YCCF-3.00-S	3.000	1.75	1.0000	30	2.2	0.03	1.813	0.91
YCCF-3.25-S	3.250	1.75	1.0000	30	2.2	0.03	1.813	0.91
YCCF-3.50-S	3.500	2.00	1.1250	30	2.5	0.03	2.063	1.03
YCCF-4.00-S	4.000	2.25	1.2500	30	2.9	0.03	2.313	1.16
YCCF-5.00-S	5.000	2.75	1.7500	48	3.9	0.06	2.875	1.44
YCCF-6.00-S	6.000	3.25	2.2500	56	4.9	0.06	3.375	1.69
YCCF-7.00-S	7.000	3.75	2.7500	60	5.4	0.06	3.875	1.94
YCCF-8.00-S	8.000	4.25	3.2550	40	6.4	0.13	4.500	2.25
YCCF-9.00-S	9.000	4.75	3.7550	40	7.4	0.13	5.000	2.50
YCCF-10.00-S	10.000	5.25	4.2550	40	7.4	0.13	5.500	2.75

Optional PCI Yoke Shaft	Optional PCI Eccentric Yoke Shaft
YSH-.625-R	YSHE-.625-R
YSH-.625-R	YSHE-.625-R
YSH-.750-R	YSHE-.750-R
YSH-.750-R	YSHE-.750-R
YSH-1.000-R	YSHE-1.000-R
YSH-1.000-R	YSHE-1.000-R
YSH-1.125-R	YSHE-1.125-R
YSH-1.250-R	YSHE-1.250-R
YSH-1.750-R	YSHE-1.750-R
YSH-2.250-R	YSHE-2.250-R
YSH-2.750-R	YSHE-2.750-R
YSH-3.250-R	-
YSH-3.750-R	-
YSH-4.250-R	-

Yoke Type Cam Follower Part Number	Basic Radial Dynamic Load Rating (lbs) C	Basic Radial Static Load Rating (lbs) Co	Seal Type	Bearing Type	Approx. Roller Weight (lbs)
YCCF-2.00-S	8,090	21,140	Moly-Filled Nylon Lip	FC Needle	0.90
YCCF-2.25-S	8,090	21,140	Moly-Filled Nylon Lip	FC Needle	1.17
YCCF-2.50-S	11,720	32,900	Moly-Filled Nylon Lip	FC Needle	1.70
YCCF-2.75-S	11,720	32,900	Moly-Filled Nylon Lip	FC Needle	2.13
YCCF-3.00-S	17,620	49,820	Moly-Filled Nylon Lip	FC Needle	2.80
YCCF-3.25-S	17,620	49,820	Moly-Filled Nylon Lip	FC Needle	3.38
YCCF-3.50-S	23,630	63,250	Moly-Filled Nylon Lip	FC Needle	4.44
YCCF-4.00-S	30,270	89,540	Moly-Filled Nylon Lip	FC Needle	6.65
YCCF-5.00-S	53,590	135,900	Moly-Filled Nylon Lip	FC Needle	12.41
YCCF-6.00-S	61,690	160,900	Moly-Filled Nylon Lip	FC Needle	20.62
YCCF-7.00-S	81,860	213,860	Moly-Filled Nylon Lip	FC Needle	32.16
YCCF-8.00-S	111,400	288,200	Moly-Filled Nylon Lip	FC Needle	46.85
YCCF-9.00-S	151,400	366,860	Moly-Filled Nylon Lip	FC Needle	64.82
YCCF-10.00-S	160,480	431,130	Moly-Filled Nylon Lip	FC Needle	88.70

ADDITIONAL NOTES

FC Needle: Full Compliment
Needle Bearings – Alloy Steel

PCI Heavy Duty Yoke Shafts are
available at an additional cost.
See YSH page for details.

Specifications subject to
change without notice.