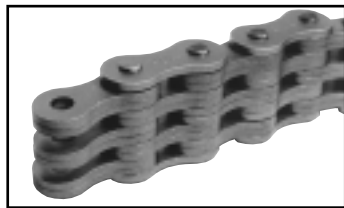
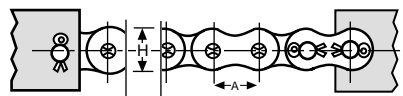
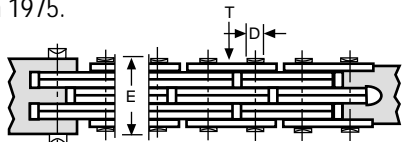


HKK Leaf chains are built of interlaced plates held together by rivet pins. They are built with the same high degree of precision as our roller chains. HKK Leaf chains are used for applications that require strong flexible linkage for transmitting motion or lift. Specially selected steel and unique heat treatment assures high strength and durability. The first number or numbers in leaf chain identifies the chain pitch, the last two numbers identify the chain's lacing. New applications should use BL series leaf chains.



AL SERIES LEAF CHAIN

HKK AL series Leaf chains are constructed of an equal number of plates on both the inner and outer links. AL series chain use the same pin diameter and plate thickness as standard ANSI chains. AL series Leaf chain was removed from ANSI standards in 1975.

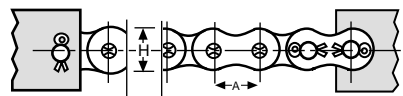
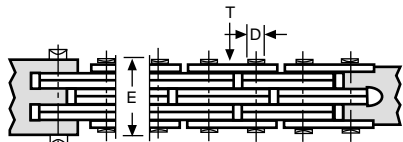


HKK Leaf Chain No.	Assembly	Pitch A	Plate		Pin Dia. D	Overall Width E	Maximum Allowable Load	Average Ultimate Strength (lbs)	Average Weight Per Foot (lbs)
			Height H	Thickness T					
AL-422	2X2	1/2	0.404	0.060	0.156	0.33	420	4,000	0.24
AL-444	4X4					0.58	770	8,000	0.46
AL-466	6X6					0.83	880	12,100	0.69
AL-522	2X2	5/8	0.500	0.080	0.200	0.43	680	6,700	0.38
AL-544	4X4					0.76	1180	13,300	0.77
AL-566	6X6					1.10	1400	19,900	1.15
AL-622	2X2	3/4	0.600	0.094	0.234	0.50	990	9,100	0.52
AL-644	4X4					0.89	1670	18,100	1.15
AL-666	6X6					1.28	1950	27,200	1.66
AL-822	2X2	1	0.800	0.125	0.312	0.67	1650	16,100	0.94
AL-844	4X4					1.16	2970	32,200	1.98
AL-866	6X6					1.69	3450	48,400	3.02
AL-1022	2X2	1-1/4	1.000	0.156	0.375	0.80	2600	23,200	1.68
AL-1044	4X4					1.45	4600	46,300	3.24
AL-1066	6X6					2.11	5390	69,500	4.92
AL-1222	2X2	1-1/2	1.193	0.187	0.437	0.95	3700	32,200	2.35
AL-1244	4X4					1.71	6530	64,500	4.58
AL-1266	6X6					2.50	7670	96,700	6.81
AL-1422	2X2	1-3/4	1.390	0.218	0.500	1.12	5000	41,200	3.25
AL-1444	4X4					2.03	8700	82,600	6.59
AL-1466	6X6					2.93	10,300	124,000	9.83
AL-1622	2X2	2	1.587	0.250	0.562	1.27	6400	52,200	4.05
AL-1644	4X4					2.29	11,200	104,700	8.24
AL-1666	6X6					3.33	13,200	156,900	12.31

Dimensions in inches & pounds

BL SERIES LEAF CHAIN

HKK BL series Leaf chains should be used in all new applications. Greater load capacities are achieved using larger diameter pins and thicker plates. Pin diameters and plate thicknesses are of the next larger size ANSI standard roller chains.



HKK Leaf Chain No.	Assembly	Pitch A	Plate		Pin Dia. D	Overall Width E	Maximum Allowable Load	Average Ultimate Strength (lbs)	Average Weight Per Foot (lbs)
			Height H	Thickness T					
BL-423	2X3	1/2	0.457	0.080	0.200	0.51	1000	6,100	0.48
BL-434	3X4					0.68	1190	9,300	0.64
BL-446	4X6					0.93	1340	12,300	0.93
BL-523	2X3	5/8	0.571	0.094	0.234	0.60	1540	9,100	0.74
BL-534	3X4					0.80	1870	13,700	1.03
BL-546	4X6					1.08	2100	18,100	1.46
BL-623	2X3	3/4	0.708	0.125	0.312	0.78	2200	13,700	1.21
BL-634	3X4					1.04	2750	20,600	1.68
BL-646	4X6					1.43	3080	27,400	2.38
BL-823	2X3	1	0.948	0.156	0.375	0.96	3800	23,200	2.05
BL-834	3X4					1.28	4600	35,100	2.85
BL-846	4X6					1.77	5280	46,300	4.06
BL-1023	2X3	1-1/4	1.154	0.187	0.437	1.13	5830	32,200	2.95
BL-1034	3X4					1.52	7000	50,400	4.08
BL-1046	4X6					2.11	8140	64,500	5.79
BL-1223	2X3	1-1/2	1.382	0.220	0.500	1.33	8250	41,300	4.15
BL-1234	3X4					1.80	9900	67,000	5.85
BL-1246	4X6					2.47	11,300	82,600	8.30
BL-1423	2X3	1-3/4	1.610	0.250	0.562	1.52	11,000	52,400	5.57
BL-1434	3X4					2.05	13,200	86,200	7.75
BL-1446	4X6					2.82	15,100	104,800	11.03
BL-1623	2X3	2	1.839	0.281	0.687	1.72	13,200	78,100	7.51
BL-1634	3X4					2.33	15,800	118,300	10.45
BL-1646	4X6					3.21	18,000	156,300	14.85

Dimensions in inches & pounds