

Free Spinning Bearing Inserts



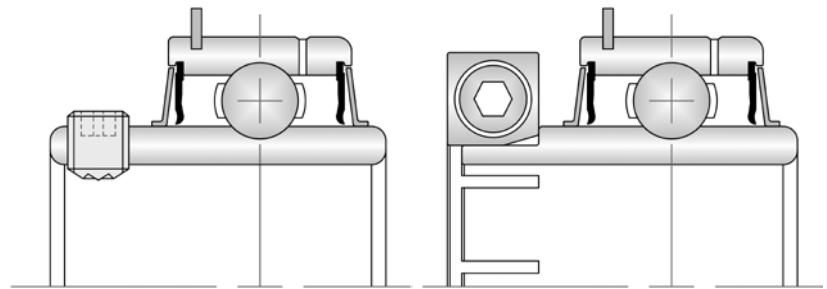
PH: (800) 882-8642 • FAX: (847) 759-0630
www.amibearings.com

Standard Features

- Set Screw (SER) or Accu-Loc (SUE)
- Bore Sizes: 1/2" ~ 2-7/16" or (20mm ~ 40mm)
- Low Drag/Non Contact Seal
- Oil Lubrication (FS)
- Grease Lubrication (FSAM1)
- AISI 52100 Steel or 440C Stainless Steel
- Zone Hardened Wide Inner Ring
- Reinforced, Stabilized Nylon Retainer ("FSX")
- Stamped Steel Riveted Retainer ("FS")

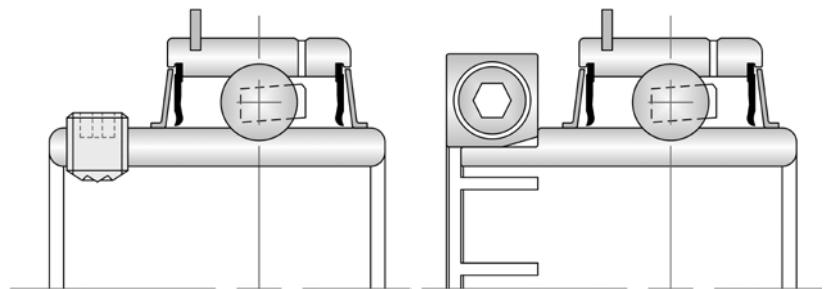
Application Examples

- Packaging
- Printing Machinery
- In Line Systems
- Conveyor Equipment



SER205-16 FS

SUE205-16 FS

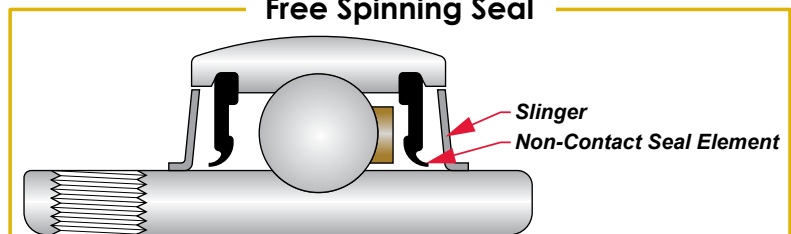


SER205-16 FSX

SUE205-16 FSX
Call for Availability



Free Spinning Seal



STARTING TORQUE CHART (gf·cm)

SER/SUE "FS"	Avg	Max	Min
201-204	30	45	25
205	40	60	30
206	60	90	45
207	80	120	60
208	100	150	75
209	120	180	90
210	140	200	105
211	160	210	120
212	180	230	135

INTERCHANGE BY MANUFACTURER

Bore/Features	AMI PART #	MB	SealMaster
1 (in.) Accu-Loc Oil Lubrication	SUE205-16FS SUE205-16FSX	ER16K HFF	ER-16T XLO
1 (in.) Accu-Loc Grease Lubrication	SUE205-16FSAM1 SUE205-16FSXAM1	ER16K MHFF	ER-16T LO
1 (in.) Set Screw Locking Oil Lubrication	SER205-16FS SER205-16FSX	ER16 HFF	ER-16 XLO
1 (in.) Set Screw Locking Grease Lubrication	SER205-16FSAM1 SER205-16FSXAM1	ER16 MHFF	ER-16 LO